

# ANTICANCER RESEARCH

International Journal of Cancer Research and Treatment

*Editorial Office:* International Institute  
of Anticancer Research,  
1st km Kapandritiou - Kalamou Rd.,  
Kapandriti, P.O.Box 22, Attiki 19014,  
Greece  
Fax: 0030-22950-53389  
Tel: 0030-22950-52945  
e-mail: journals@iiar-anticancer.org

Dear Sir/Madam,

Please find the enclosed galley proofs of your article. Below are instructions on how to help facilitate the timely publication of your article in ANTICANCER RESEARCH.

1. Please read, correct and return the proofs to the Editorial Office within 2-3 working days.
2. Proofs may be Faxed, e-mailed or returned by the fastest mail available. Delays in the return of your proofs may necessitate transferring your paper to a later issue of the journal.
3. While reviewing your manuscript, please be on the lookout for unintended changes in the meaning of the text through editorial corrections or language improvements.
4. With the exception of the above, corrections should be limited to typographical errors.
5. To promote our rapid publication policy, figures are not sent to authors unless alterations have been made through the editing process.
6. **Should you require extra reprints of your article, please order them now.** Reprints ordered at this time will reach you considerably faster than if ordered after the publication of your article.
7. For further information on your article (publication date, volume, page numbers *etc.*), please contact the Editorial Office by Fax/Tel: 0030-22950-53389, e-mail: journals@iiar-anticancer.org, or by sending a letter to the Editorial Office: International Institute of Anticancer Research, 1st km Kapandritiou - Kalamou Rd., Kapandriti, P.O.Box 22, Attiki 19014, Greece.
8. In all correspondence with us please provide your manuscript number, your complete postal address, telephone/fax numbers and e-mail address.

Thank you for taking the time to study these guidelines.

Yours,



*J.G. Delinassios*  
*Managing Editor*

Enclosures

## Novel Therapy for Malignant Pleural Mesothelioma Based on Anti-Energetic Effect: An Experimental Study Using 3-Bromopyruvate on Nude Mice

XIAODONG ZHANG<sup>1,5</sup>, EMILIE VARIN<sup>1</sup>, MÉLANIE BRIAND<sup>1</sup>, STÉPHANE ALLOUCHE<sup>2</sup>, NATACHA HEUTTE<sup>1</sup>, LAURENT SCHWARTZ<sup>4</sup>, LAURENT POULAIN<sup>1</sup> and PHILIPPE ICARD<sup>1,3</sup>

<sup>1</sup>Anticancer regional Study Group (EA 1772-Bioticla), Anticancer Center François BACLESSE, Caen;

<sup>2</sup>Biochemistry Laboratory and <sup>3</sup>Thoracic and Cardio-Vascular Surgery Department, University Hospital Center of Caen;

<sup>4</sup>Ecole polytechnique, Saclay, France;

<sup>5</sup>Graduate School of Guangxi Medical University, Guangxi, China

**Abstract.** *Background: Most cancer cells exhibit increased anaerobic glycolysis and use this metabolic pathway for the generation of ATP as a main source of energy. This impaired metabolism of glucose, leading to the secretion of lactic acid even in the presence of oxygen, is named the “Warburg effect”. Because cancer cells are partly or mainly dependent on such a pathway to generate ATP, inhibition of glycolysis may slow down the proliferation or kill cells. Materials and Methods: The effect of 3-Bromopyruvate (3-BrPA) alone or associated to cisplatin on nude mice presenting intraperitoneal carcinomatosis developed after intraperitoneal injection of human mesothelioma cells (MSTO-211H) was investigated. Results: 3-BrPA significantly prolonged survival of animals. Combined with cisplatin, it demonstrated significant benefit on survival whereas cisplatin alone had no or mild effect. Conclusion: 3-BrPA may thus constitute an interesting novel anticancer drug that could be tested in humans.*

The development of malignant mesothelioma is often associated with an occupational exposure to asbestos (1). Because this cancer is usually resistant to chemotherapy and radiotherapy, most of patients die within two years of diagnosis (2). Therefore, about 250,000 deaths are predicted throughout Western Europe in the next two decades (3).

Most cancer cells exhibit increased aerobic glycolysis and use this metabolic pathway for the generation of ATP as a

main source of energy. This impaired metabolism of glucose, leading to secretion of lactic acid (even in the presence of oxygen) is a phenomenon first described by Otto Warburg, more than 50 years ago (4). The increased cellular uptake of glucose is nowadays used to visualize cancer tumours with positron emission tomography using 2-deoxy-2-<sup>18</sup>F-D-glucose (FDG). Because ATP generation through glycolysis is far less efficient than through mitochondrial oxidative phosphorylation (2 versus 36 ATP per glucose), cancer cells consume far more glucose than normal cells to maintain sufficient energy production for their active metabolism and proliferation.

Although the biochemical and molecular mechanisms of the “Warburg effect” are rather complex and can be multiple (adaptation to the hypoxic environment, direct effect of hypoxia inducible factor 1 alpha, mutation in oncogenes or alteration of proteins involved in signal transduction pathways as well as in energetic metabolism) (5-7), the metabolic consequences are quite similar: cancer cells are partly or mainly dependent on such a metabolic pathway to generate ATP. Consequently, the inhibition of glycolysis may slow down the proliferation of cancer cells or kill cells (8, 9). Moreover, this action could be very interesting to destroy the median and profound part of tumours where the hypoxic environment favour cells to switch to a high glycolytic activity.

3-Bromopyruvate (3-BrPA) is an analogue of pyruvate, a cytoplasmic and mitochondrial molecule that plays a key role in the energetic metabolism. It causes a depletion of ATP in cancer cells, and this effect is especially severe in cells with mitochondrial DNA deletion and respiration defects, leading to massive cell death (5-7). In two previous studies performed on tumour bearing rabbit and rat, 3-BrPA has demonstrated an anti-tumoral activity with a beneficial effect on survival (6, 10). Although the drug could interfere with all biochemical enzymes metabolising pyruvate (*i.e.*,

*Correspondence to:* Philippe Icard, Service de Chirurgie Thoracique et Cardio-Vasculaire, CHU de Caen, Avenue de la Côte de Nacre, 14000 Caen, France. Tel: +33 2 31064446, Fax: +33 2 31065165, e-mail: icard-p@chu-caen.fr

*Key Words:* Mesothelioma, nude mice, glycolysis, energetic metabolism, chemotherapy.

pyruvate dehydrogenase, pyruvate carboxylase, or lacticodehydrogenase), it has been considered to be able to inhibit hexokinase (HK), the first key enzyme of glycolysis (5). Moreover, HK is associated with phospho-Bad and VDAC to form a complex on the external mitochondrial membrane inhibiting apoptosis. It has been shown that the removal of HK by 3-BrPA from this complex allows Bad dephosphorylation and leads to apoptosis induction (11, 12). It is noteworthy that depletion of ATP by 3-BrPA also induces apoptosis in multi-drug resistant cells (7). Otherwise, it has been observed that severe depletion in ATP tends to cause cell death by necrosis rather than by apoptosis, especially in cells exhibiting a high glycolytic activity (hypoxic environment and/or respiratory mitochondrial dysfunction) (7, 8, 13).

The aim of this work was to report the effect of 3-BrPA, associated or not to conventional chemotherapy (cisplatin), in peritoneal carcinomatosis developed in nude mice after intra- peritoneal injection of human mesothelioma MSTO-211H cells.

## Materials and Methods

**Cell line and culture.** Human mesothelioma cell lines MSTO-211H and NCI-H28 were obtained from the American Type Culture Collection (ATCC), USA. Cell lines were grown in RPMI 1640 medium supplemented with 2 mM Glutamax™ (Fisher Scientific Bioblock, Illkirch, France), 10% fetal calf serum (Fisher Scientific Bioblock), 20 mM HEPES and 33 mM sodium bicarbonate (Gibco BRL, Lyon, France). Cells were maintained in a 5% CO<sub>2</sub> humidified atmosphere at 37°C.

**Nude mice.** Five weeks old athymic female nude mice (Swiss/Nude CD1), weighing 20-25g, were obtained from Charles River Laboratory (L'Abresles, France). Animals were kept under pathogen free conditions and given food and water *ad libitum*. When considered as moribund, animals were sacrificed, and laparotomy was performed to confirm the diffuse peritoneal carcinomatosis that was checked histologically to correspond to mesothelioma (Pr. Françoise Galateau, Dr Cécile Blanc-Fournier). Experiments were conducted according to the national ethical committee.

**Chemicals.** The solution of 3-BrPA (Sigma Aldrich) was dissolved in 0.9% NaCl and neutralized by NaOH until pH 7.5. Cisplatin solution (CDDP, *cis*-diamino-dichlororo-platinum (II)) was obtained from MERCK (LYON, France).

**Protocol and therapeutic procedures.** Nude mice received an intraperitoneal injection of MSTO-211H cell line (20,106 cells in 1 mL). In a first series of experiments, animals were pair-matched in several groups (12 mice per group) at day 21 as follows: control group received 1 ml of physiological serum; 3-BrPA treated group received a daily intraperitoneal injection of the drug during 4 days at a dose of 2.67 mg/kg in 0.8 ml (*i.e.* 500 µM); cisplatin treated group received a single intraperitoneal injection of the drug at a dose of 4 mg/kg in 1 ml 0.9% NaCl; combined treated group received both treatment: cisplatin at day 21 followed by four days of

treatment with 3-BrPA at the same aforementioned doses. The dose of 3-BrPA was chosen according to the publication of Ko *et al.* (6), whereas the dose of cisplatin (C4) was chosen after a study performed in our laboratory about the drug toxicity showing a renal toxicity at a dose of 8 mg/kg of cisplatin, and no anti-tumoral activity at a dose of 2 mg/kg. Therefore, the dose of 4 mg/kg (C4) appeared as a good compromise, non toxic with a relative efficiency. It is noteworthy that doses ranged from 3 to 6 mg/kg are commonly used by researchers using cisplatin in various laboratories.

In a second set of experiments, all groups and protocol of treatment were identical, except for the two groups that received treatment with 3-BrPA (alone or combined with cisplatin). In those groups, the treatment with 3-BrPA was repeated for four days one week after the end of the first set of injections.

**Mitochondrial respiration.** MSTO-211H and NCI-H28 cells were grown in 75 cm<sup>2</sup> flask until 80-90% of confluence. Cells were detached in 0.25% trypsin/EDTA solution, harvested by centrifugation (100 g during 5 min), rinsed with phosphate-buffered saline (PBS) then suspended in the respiration buffer (KMES 100 mM, KH<sub>2</sub>HPO<sub>4</sub> 5 mM, EGTA 1 mM, EDTA 3 mM, BSA 1 mg/mL and ADP 1 mM, pH=7.4).

Oxygen consumption was measured at 37°C using the Hansatech polarograph in a final volume of 0.4 mL. Mitochondrial respiration was recorded after addition of digitonine 0.005%, rotenone 25 µM and succinate 25 mM. The reaction specificity was demonstrated using KCN 2.5 mM. Results shown are expressed as nmol of O<sub>2</sub>/min/mL.

**Statistical analysis.** Survival was calculated in days according the Kaplan-Meier method and survivals were compared using the log-rank test (logiciel SAS 9.1), with a 95% confidence interval, and a *p*-value less than 0.05 was considered as significant.

## Results

In the first experimentation (Figure 1A), survival of animals receiving 3-BrPA or cisplatin alone was not improved as compared to control animals. In these groups, almost all mice died before day 45. In contrast, animals treated by the association cisplatin/3-BrPA had a significant benefit on survival as compared both to control group (*p*=0.0021), or to groups receiving 3-BrPA alone (*p*=0.0024) or cisplatin alone (*p*=0.0161). This benefit was approximately 20 days as compared to the control, which accounts for about 30% of additional survival at day 45. It must be noticed that in this experiment, tumor did not developed in 10% of mice, even in the control group. Therefore, the results of autopsy of the animals that survived more than 80 days are difficult to interpret: two of three mice that were treated with 3-BrPA and C4 had no tumor. However, these results encouraged reproduction of this experimentation, but in order to increase the efficiency of this protocol, reiteration of the administration of 3-BrPA for four days one week after the end of the last injection was performed.

The results of this second experimentation are presented in Figure 1B. In contrast with the first experimentation,

cisplatin alone exerted this time a beneficial effect on survival ( $p=0.0329$ ), but this effect was mild. Also, the reiteration of the administration of the 3-BrPA alone one week later produced a significant effect on survival of the treated animals when compared to control animals ( $p<0.0001$ ) or to animals that received only cisplatin ( $p=0.0012$ ). Moreover, the association of cisplatin with 3-BrPA administered in such conditions (reiteration one week later) also demonstrated a very significant effect on survival when compared to the control group ( $p<0.0001$ ). At 45 days, the survival rate of animals treated by associated treatments was 25% whereas all untreated animals died within 28 days. However, this association did not provide better survival than that observed with 3 BrPA alone. It is noteworthy that in this second experimentation where control animals demonstrated 100% of tumor development, two animals treated by 3 BrPA alone and two animals treated by 3 BrPA and C4 survived at day 50. Tumor development was then evaluated after sacrifice, showing that in mice treated with 3BrPA alone mild tumour development was observable in various areas of the abdominal cavity, whereas in mice treated with 3 BrPA and C4 no residual tumor remained observable.

## Discussion

Because prognosis of human mesothelioma is very poor, experimental research aiming to define new therapeutics improving survival is needed. In this study, the therapeutic potential of 3-BrPA in a pertinent model of mesothelioma established *in vivo* was directly assessed, the goal being to evaluate the survival benefit. Both pleural and peritoneal mesothelioma models could be used for such investigation. Some authors have tried to establish human mesothelioma directly in the pleura of animals by injecting tumour cells (H-meso I cell line) in the pleural space of immunodeficient rats after a left pneumonectomy (14). Other authors have fixed fresh fragments of human tumours in the left pleural cavity of nude mice (15, 16). However, considering both the morbidity associated with such a pleural tumour implantation (risk of pneumothorax) and the difficulty to administer reiterated treatments through this way, experimental studies performed *in vivo* on mesothelioma are frequently realized on peritoneal carcinomatosis (17, 18). Thus, it was decided to develop a simpler model by injecting a human cancer cell line (MSTO-211H) in the abdominal cavity of nude mice. Moreover, it must be noticed that around 5% of mesothelioma develop first in the peritoneal cavity, and that secondary invasion of the peritoneum is a usual event during extension of pleural mesothelioma.

Because Pedersen and colleagues reported impressive results using 3-BrPA, either in Sprague-Dawley rats (6) or in rabbits (10) bearing human hepatocellular carcinoma (HCC) ("AS-30D" line), the efficiency of this drug in mesothelioma

was investigated. Indeed, when 3-BrPA was administered over four days in rats presenting «advanced» subcutaneous or intraperitoneal tumours (2-3 cm in diameter), either by direct intratumoral injection or by intraperitoneal injection, a complete regression of tumours and prolonged survival was observed (6), sometimes after a sole injection of 3-BrPA (10). When the drug was administered intravenously, a markedly suppression of secondary metastatic tumors in the lung was observed, without harmful effects (10).

In this model of mesothelioma, it was not possible to reproduce such impressive results using 3-BrPA, but mainly a very significant prolongation of survival of treated animals, evocating only a slow down of tumor development. When 3-BrPA was used alone, tumor residues were systematically observed in mice surviving more than 45 days.

Moreover, this increase of survival was obtained only after reiterated treatment, since this effect was not observed in the first experiment in which 3-BrPA was only administered during four days. However, in such reiterated conditions, 3-BrPA appeared more active than conventional chemotherapy with cisplatin.

Although the adjunction of cisplatin to 3-BrPA did not significantly increase survival as compared to 3-BrPA alone in the second experiment, it must be noticed that two out of three animals who survived more than 45 days did not demonstrate any residual tumors. Therefore, the rate of complete response was 2/12 (*i.e.*: 17%). These complete responses suggest that the association of cisplatin and 3-BrPA exerts a cytotoxic effect more important than that exerted by the drugs given separately. This is in agreement with the study reported by Xu *et al.* (7) suggesting that such an antiglycolytic strategy could help to overcome drug resistance. Such a synergy could be explained by various hypotheses. Indeed, 3-BrPA could have impeded DNA repair since ATP is needed for this reparation thus leading to a higher level of persistent DNA damages due to platination. Furthermore, as aforementioned 3-BrPA could allow Bad dephosphorylation (through its action on Hexokinase) thus favouring Bax/Bak induced apoptosis, these proteins being themselves activated by cisplatin (11, 12, 19, 20).

The difference of response to 3-BrPA alone between this study and the studies previously published (6, 10) could be due to differences in the level of mitochondrial respiration varying from one cell type to another. Moreover, among mesothelioma cells such differences were also observed. Indeed, in two human mesothelioma cell lines, great differences in the response to 3-BrPA were observed: it only slowed down the proliferation of MSTO-211H cells, whereas it efficiently killed NCI-H28 cells (Figure 2A). Investigating the mitochondrial respiration, it was observed that MSTO-211H cells exhibited a normal mitochondrial respiration, whereas NCI-H28 cells presented a clearly decreased mitochondrial respiration (Figure 2B). The distinct responses

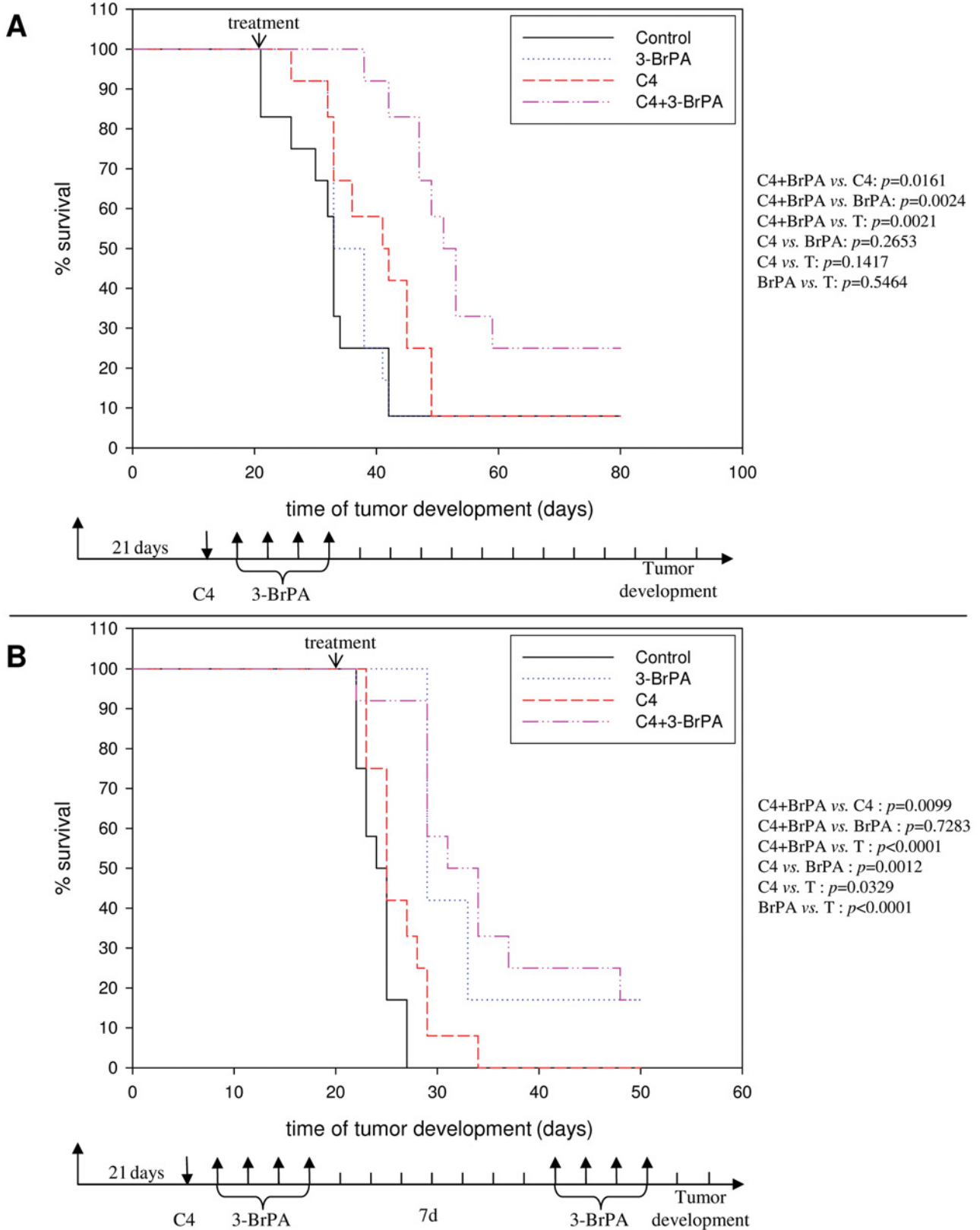


Figure 1. Effect of 3-BrPA on mesothelioma bearing mice survival. [A]: Unique administration of 3-BrPA during 4 days; [B]: reiterated administration of 3-BrPA during 4 days one week after the first series of injections.

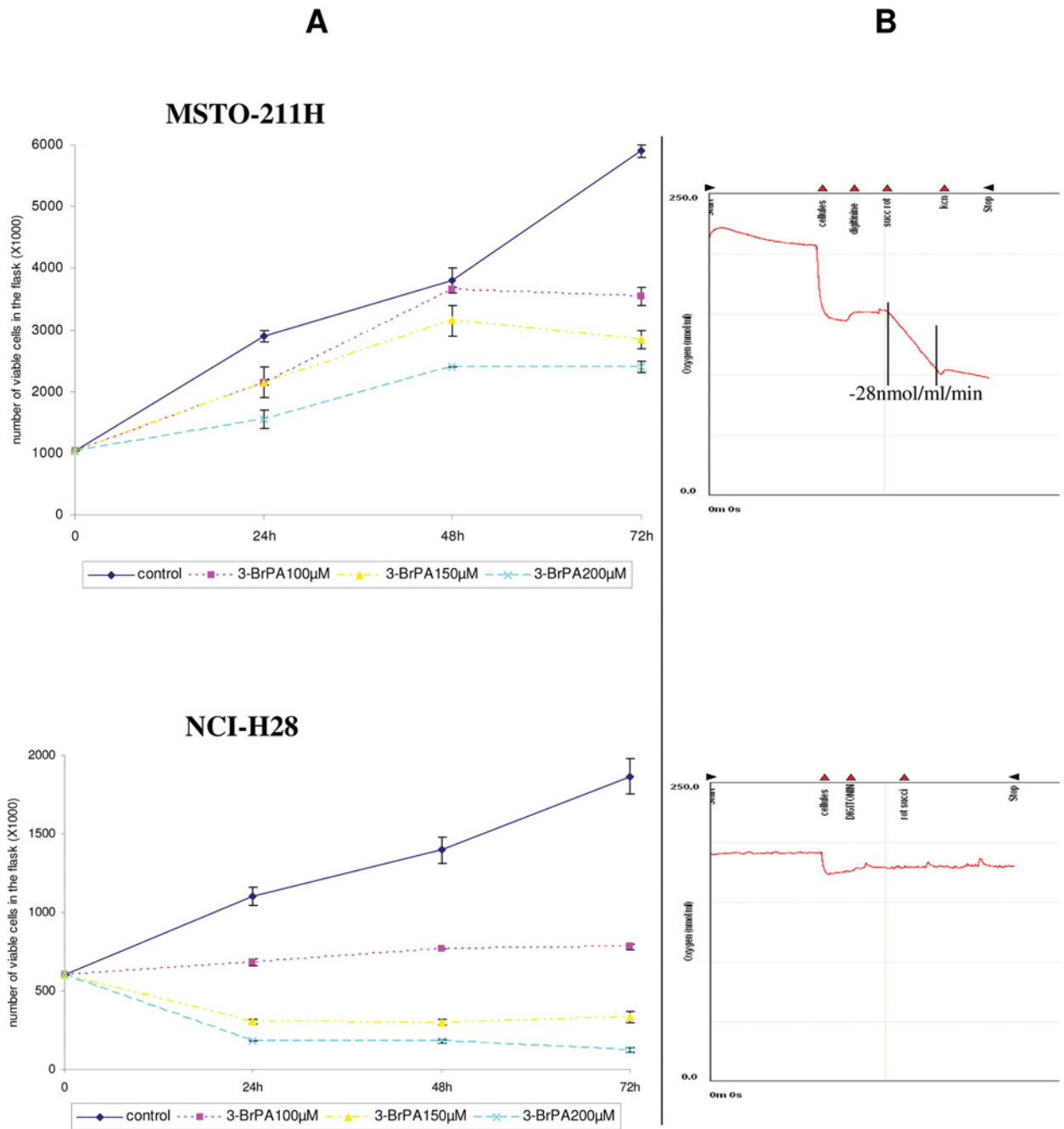


Figure 2. Effect of 3-BrPA on MSTO-211H and NCI-H28 cell lines *in vitro* and study of mitochondrial respiration in these cell lines [A]: number of viable cells in the flask after three days of 3-BrPA exposure; [B]: oxygen consumption by MSTO-211H and NCI-H28 cells.

to 3-BrPA could be correlated to the different possibilities of cells to use their mitochondrial respiration and to overcome glycolytic inhibition. Further studies are needed to precise these points that suggest a level of Warburg effect variation depending of the type of cancer cells. It could be interesting to evaluate the effect of 3-BrPA on tumour developed *in vivo*

by NCI-H28 mitochondrial respiration deficient cells, but unfortunately, for unexplained reasons, no abdominal carcinomatosis could be produced by injection of these cells in abdominal cavity of nude mice.

In summary, it was shown that 3-BrPA is able to slow-down tumor development of mesothelioma, and that its

association with cisplatin may allow complete response, as observed in about 20% of mice. Moreover, this effect could be amplified in mitochondria deficient cells, as suggested by *in vitro* results and by Xu *et al.* (7). Finally, deprivation of cellular energy supplied by 3-BrPA could be a novel anticancer strategy that could be interesting to further evaluate and optimize the treatment of human mesothelioma, particularly as a neo-adjuvant treatment in association with conventional chemotherapy.

### Acknowledgements

We thank Marie-Christine Bon for animal care and Edwige Lemoisson for helpful technical assistance. This work was supported by the Association «Coeur et Cancer de Cherbourg», the «Caisse d'Épargne Régionale de Basse-Normandie», and the «Ligue Contre le Cancer» (Comités de la Manche, de l'Orne et du Calvados).

### References

- Lund LG and Aust AE: Iron-catalyzed reactions may be responsible for the biochemical and biological effects of asbestos. *Biofactors* 3: 83-89, 1991.
- Ribak J and Selikoff IJ: Survival of asbestos insulation workers with mesothelioma. *Br J Ind Med* 49: 732-735, 1992.
- Peto J, Decarli A, La VC, Levi F and Negri E: The European mesothelioma epidemic. *Br J Cancer* 79: 666-672, 1999.
- Warburg O: On the origin of cancer cells. *Science* 123: 309-314, 1956.
- Ko YH, Pedersen PL, and Geschwind JF: Glucose catabolism in the rabbit VX2 tumor model for liver cancer: characterization and targeting hexokinase. *Cancer Lett* 173: 83-91, 2001.
- Ko YH, Smith BL, Wang Y, Pomper MG, Rini DA, Torbenson MS, Hullihen J and Pedersen PL: Advanced cancers: eradication in all cases using 3-bromopyruvate therapy to deplete ATP. *Biochem Biophys Res Commun* 324: 269-275, 2004.
- Xu RH, Pelicano H, Zhou Y, Carew JS, Feng L, Bhalla KN, Keating MJ and Huang P: Inhibition of glycolysis in cancer cells: a novel strategy to overcome drug resistance associated with mitochondrial respiratory defect and hypoxia. *Cancer Res* 65: 613-621, 2005.
- Leist M, Single B, Castoldi AF, Kuhnle S and Nicotera P: Intracellular adenosine triphosphate (ATP) concentration: a switch in the decision between apoptosis and necrosis. *J Exp Med* 185: 1481-1486, 1997.
- Zhang XD, Deslandes E, Villedieu M, Poulain L, Duval M, Gauduchon P, Schwartz L and Icard P: Effect of 2-deoxy-D-glucose on various malignant cell lines *in vitro*. *Anticancer Res* 26: 3561-3566, 2006.
- Geschwind JF, Ko YH, Torbenson MS, Magee C and Pedersen PL: Novel therapy for liver cancer: direct intraarterial injection of a potent inhibitor of ATP production. *Cancer Res* 62: 3909-3913, 2002.
- Daniel NN, Gramm CF, Scorrano L, Zhang CY, Krauss S, Ranger AM, Datta SR, Greenberg ME, Licklider LJ, Lowell BB, Gygi SP and Korsmeyer SJ: BAD and glucokinase reside in a mitochondrial complex that integrates glycolysis and apoptosis. *Nature* 424: 952-956, 2003.
- Ferreira CG, Epping M, Kruyt FA and Giaccone G: Apoptosis: target of cancer therapy. *Clin Cancer Res* 8: 2024-2034, 2002.
- Lieberthal W, Menza SA and Levine JS: Graded ATP depletion can cause necrosis or apoptosis of cultured mouse proximal tubular cells. *Am J Physiol* 274: F315-F327, 1998.
- Prewitt TW, Lubensky IA, Pogrebniak HW and Pass HI: Orthotopic implantation of mesothelioma in the pneumonectomized immune deficient rat: a model for innovative therapies. *Int J Cancer* 55: 877-880, 1993.
- Astoul P and Boutin C: An experimental model of pleural cancer. Value of orthotopic implantation of human tumor tissue in nude mice. *Rev Mal Respir* 14: 355-362, 1997.
- Martarelli D, Catalano A, Procopio A, Orecchia S, Libener R and Santoni G: Characterization of human malignant mesothelioma cell lines orthotopically implanted in the pleural cavity of immunodeficient mice for their ability to grow and form metastasis. *BMC Cancer* 6: 130, 2006.
- Spugnini EP, Cardillo I, Verdina A, Crispi S, Saviozzi S, Calogero R, Nebbioso A, Altucci L, Cortese G, Galati R, Chien J, Shridhar V, Vincenzi B, Citro G, Cognetti F, Sacchi A, and Baldi A: Piroxicam and cisplatin in a mouse model of peritoneal mesothelioma. *Clin Cancer Res* 12: 6133-6143, 2006.
- Tomasetti M, Gellert N, Procopio A and Neuzil J: A vitamin E analogue suppresses malignant mesothelioma in a preclinical model: a future drug against a fatal neoplastic disease? *Int J Cancer* 109: 641-642, 2004.
- Tajeddine N, Galluzzi L, Kepp O, Hangen E, Morselli E, Senovilla L, Araujo N, Pinna G, Larochette N, Zamzami N, Modjtahedi N, Harel-Bellan A and Kroemer G: Hierarchical involvement of Bak, VDAC1 and Bax in cisplatin-induced cell death. *Oncogene* 2008.
- Jones NA, Turner J, McIlwrath AJ, Brown R and Dive C: Cisplatin- and paclitaxel-induced apoptosis of ovarian carcinoma cells and the relationship between bax and bak up-regulation and the functional status of p53. *Mol Pharmacol* 53: 819-826, 1998.

Received December 23, 2008

Revised February 6, 2009

Accepted February 25, 2009

# ANTICANCER RESEARCH

International Journal of Cancer Research and Treatment

ISSN: 0250-7005

February 25, 2009

Dr. Philippe Icard

Re: Your manuscript No. **9991-Z** entitled «**Novel Therapy for Malignant Pleural...**»

**Dear Dr**

Referring to your above manuscript for publication in AR, please allow us to use this form letter in reply:

1. *Referee's recommendations:*

- Urgent to be published immediately.
- Accepted in the presented form.
- Accepted with minor changes.
- Accepted with grammatical or language corrections.
- Remarks:

2. *Excess page charges.*

- Your article has approx. **6** printed pages and is in excess of the allotted number by approx. **2** printed pages. The charges are EURO € **180** per excess page, totalling EURO € **360**  
We ask you to confirm acceptance of these charges.
- Your article includes **2** pages with color figures. The charges are EURO € **650** per color page, totalling EURO € **1300**  
**TOTAL charges are EURO € 1660 (-20% Discount)**
- Our invoice is sent by air mail to the corresponding author.

3.  Your article will appear in Volume **29**, Issue No. **4, 2009**

4.  Please order your reprints now. This will facilitate our prompt planning of future issues and rapid publication of your article. Reprints will be delivered by air mail within one month from publication.

We would appreciate your prompt reply.

With many thanks,

Yours sincerely,



J.G. Delinassios

Managing Editor

EDITORIAL OFFICE: INTERNATIONAL INSTITUTE OF ANTICANCER RESEARCH  
1st km Kapandritiou - Kalamou Rd., Kapandriti, P.O.B. 22, Attiki 19014, Greece. Tel.: 0030-22950-52945;  
Tel & Fax:0030-22950-53389; e-mail: journals@iiar-anticancer.org



# ANTICANCER RESEARCH

## International Journal of Cancer Research and Treatment

*Editorial Office:* International Institute of Anticancer Research,  
1st km Kapandritiou-Kalamou Rd., Kapandriti, P.O.B. 22, Attiki 19014, Greece  
Fax: +30-22950-53389; Tel: +30-22950-52945; e-mail: journals@iiar-anticancer.org

ISSN: 0250-7005

Please type or print the requested information on the reprint order form and return it to the Editorial Office by fax or e-mail.

Reprints must be paid for in advance.

If your paper is subject to charges for excess pages or color plates, please add these charges to the payment for reprints.

The reprints are not to be sold.

### PRICE LIST FOR REPRINTS WITHOUT COVER

Page length	PDF file	Number of copies requested (prices are in Euro)									
		100	200	300	400	500	1000	1500	2000	3000	5000
1-4pp	167	335	387	438	503	554	851	1135	1470	2038	3225
5-8	219	438	503	580	645	722	1083	1445	1832	2554	4012
9-12	277	554	619	709	787	877	1341	1780	2219	3096	4824
13-16	354	709	787	890	993	1096	1625	2141	2657	3676	5715
17-20	419	838	929	1032	1148	1277	1883	2451	3044	4244	6527

*For reprints with cover: Please add EURO 140.00 per 100 copies.*

*Postage: Please add 4% on the above prices.*

## Reprint Order Form

Of my paper No. **9991-Z** comprising **6** printed pages, entitled «**Novel Therapy for Malignant Pleural...**» accepted for publication in ANTICANCER RESEARCH Vol. **29** No. **4**

- I require a total of \_\_\_\_\_ copies at EURO \_\_\_\_\_
- I do not require reprints.
- Please send me a PDF file of the article at EURO \_\_\_\_\_.
- Please send me a copy of this issue containing my paper at EURO 45.00.
- Please enter my personal subscription to ANTICANCER RESEARCH at the special Author's price of EURO 417.00 (print or online); EURO 500.00 (print & online) ( Year: 2009).
- A check for the above amounts payable to J.G. Delinassios, Executive Publisher of Anticancer Research Journal, is enclosed.
- Please send an invoice to:

For EC countries: Please give your VAT number:

City and Date:

Exact postal address:

Tel:

Fax:

Signature: